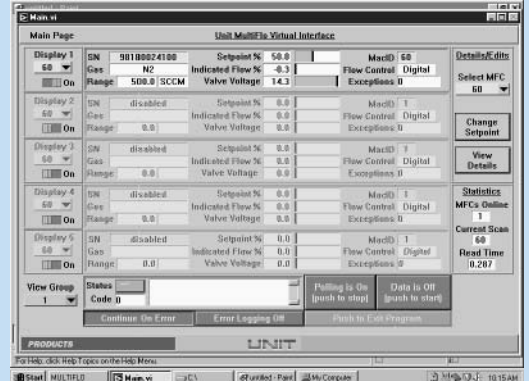


Virtual Interface

- » Virtual Interface to communicate with and control any RS485 Unit Digital MultiFlo™ mass flow controllers/meters to access the benefits of digital technology
- » User-friendly Windows-based application
- » Allows in-situ programming, monitoring and diagnostic



Main screen of the MultiFlo Virtual Interface

Features at a glance

- Can be used with Unit Digital MultiFlo mass flow controllers and meters model 8101, 1661, 8161, 3161, 1663 and 8163
- Can be used on a PC hardware platform communicating to a RS232 port through an external RS232-to-RS485 adapter to a Unit RS485 MultiFlo MFC
- Up to 32 MultiFlo MFC daisy chained together can be monitored and/or controlled at one time
- Programmable gases and ranges through access to the MFC calibration table that contains all the gases and ranges the MFC has been calibrated for. This function allows to program an MFC from inventory before installation on the tool or in situ.
- Calibration adjustment, even when using N₂ calibration check
- Programmable response time for slow flow ramp up
- Programmable auto zero and auto shut-off feature
- Monitors the setpoint, flow and valve voltage through real time charting and recording to file. Data is stored in file for use with other applications by the user and can be retrieved for display at a later time. Makes it possible to fingerprint and to monitor the MFC, leading to reduction of unnecessary removals of good MFC from production.
- Displays error messages to signal current and potential problems with the MFC, including zero drift
- Displays the length of time the MFC has been powered on
- Displays the length of time the MFC has controlled gas flow

- Written in LabView, Labview not required. Labview drivers available to integrate with other LabView applications.

Requirements

- **MFC/MFM compatibility**

Unit Digital MultiFlo MFC/MFM Models 8101, 1661, 8161, 3161, 1663 or 8163 with power supply

- **Operating system**

Windows 95/98, Windows 2000, Windows XP

- **Memory required (ram)**

32MB recommended with 15MB free on hard disk

- **Communication**

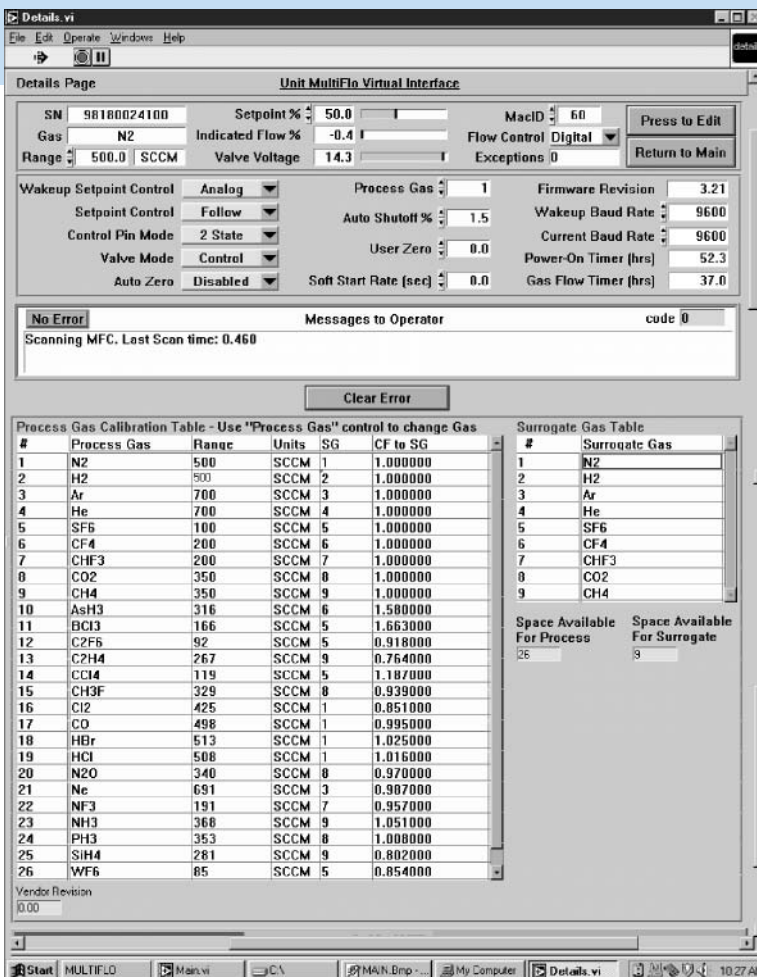
Can select any of the standard PC com ports 1, 2, 3 or 4

- **Accessory kit includes:**

Virtual Interface software (CD-ROM and 3.5 in diskettes), RS232 to RS485 adapter, instruction manual

A complimentary program for control under Windows 3.1 with a limited set of attributes is included. This program does not support data collection.

Virtual Interface-Detail screen



The detail screen of the Virtual Interface. From this screen the user can reprogram gases and ranges directly from the Virtual Interface software.



CELERITY, INC.
22600 Savi Ranch Parkway
Yorba Linda, California 92887
Telephone 714.279.3500
Facsimile 714.921.0804
www.celerity.net



For technical assistance, contact Celerity Applications Engineering at 714.279.3500.



Celerity, Unit, MultiFlo, IsoSensor, and CrossChek are trademarks of Celerity, Inc. All other product or service names mentioned in this document may be trademarks of the companies with which they are associated. System descriptions are typical and subject to change without notice.