

Photoelectric Liquid Leak Sensors

RS Series

Applications

- » Process equipment using wet chemistry or other process fluids
- » Drip pans or cabinet floor locations
- » Chemical distribution boxes
- » Overhead secondary containment traps or pipe racks
- » Any corrosive or abrasive environment where leaks can occur

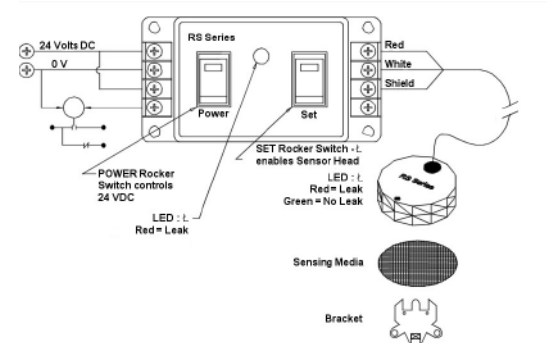


Features

- Infrared optical sensor detects minimal leaks
- Status indicator (red LED)
- Various chemically compatible materials available
- Control/detector combination or standalone units available
- CE marked
- UL recognized

Operating principle

The bracket is mounted to a horizontal, flat surface with the leak sensor is clipped into the bracket (in most cases along with media paper). When a leak occurs, the infrared light source is interrupted by the liquid, the LED turns red, and the sensor power output drops to 0V. During a normal, or no leak state, the infrared light source is not illuminated and the power output is 5V.



Detection Unit Specifications	RS1000	RS1500	RS2000	RS3000
Detectable Failure	No	No	Yes	Yes
Output	NPN	PNP	NPN	NPN
Supply voltage	5Volt-24 Volt DC $\pm 5\%$	24 Volt DC $\pm 5\%$	5 Volt DC $\pm 5\%$	24 Volt DC $\pm 5\%$
Weight	40-55g	55g	40-55g	40g
Temperature range	-10°C to 60°C			
Current draw	Less than 20mA			
Paperless option	Yes			

Control Unit Specifications	RS1000	RS2000	RS3000
# Detectors	10 Units in Parallel OR 8 Units in Series	1 Unit OR 8 Units in Series	Up to 8 Units
Weight	90-300g	100-330g	~100g
Supply voltage	24 Volt DC 10%		
Temperature range	-10°C to 60°C		
Current draw	Less than 200mA		



CELERITY, INC.
 22600 Savi Ranch Parkway
 Yorba Linda, California 92887
 Telephone 714.921.2640
 Facsimile 714.921.0804
 www.celerity.net

Celerity is a trademark of Celerity, Inc. All other product or service names mentioned in this document may be trademarks of the companies with which they are associated. System descriptions are typical and subject to change without notice.