

MegaView™ Supervisory System

- » Global data collection
- » Process monitoring
- » Trending of critical process parameters
- » Activity, alarm and batch reports

System Features

The MegaView Supervisory System is engineered to provide global data collection and monitoring of all Kinetics equipment. User-friendly graphic screens collect and display critical process information to fab and process personnel. From a SCADA node, users can monitor equipment parameters, view animated flow schematics of equipment, monitor and acknowledge alarms, view setpoints, view real time and historical trends and generate reports. From View nodes, users can monitor equipment parameters, view animated flow schematics of equipment and generate reports. Flow schematics of the equipment are depicted on the Process Overview screens. Animation of the flow schematics is based on real time events of the equipment.

System Hardware and Software

Scada server hardware:

- Minimum desktop PC - Pentium III Ghz processor
- Minimum 2-20 GB hard drives
- Minimum 512 MB RAM
- 1784-PKTX Interface card for DH+ communication link
- 3 1/2" floppy drive
- CD-RW drive
- Ethernet network interface card
- 17" TFT monitor
- Standard 101 keyboard, mouse, speakers
- Standard sound and video cards
- Color printer

Scada client (view node) hardware:

- Minimum desktop PC - Pentium III 667Mhz processor
- Minimum 20 GB hard drive
- Minimum 512 MB RAM
- 3 1/2" floppy drive
- CD-RW drive
- Ethernet network interface card
- 15" TFT monitor
- Standard 101 keyboard, mouse
- Standard sound card
- Internal PC Speakers

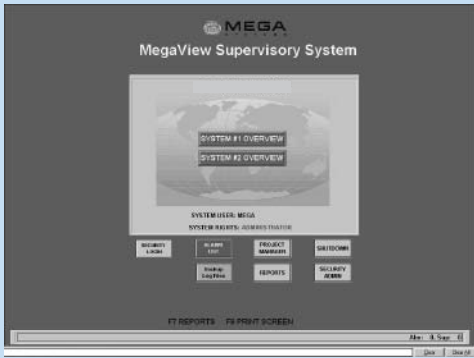
Scada server software:

- Runtime license for RSVIEW32 software
- Active Display Server License
- Communication driver for Allen-Bradley Networks
- Microsoft Windows 2000 Server
- Microsoft Office Pro 2000

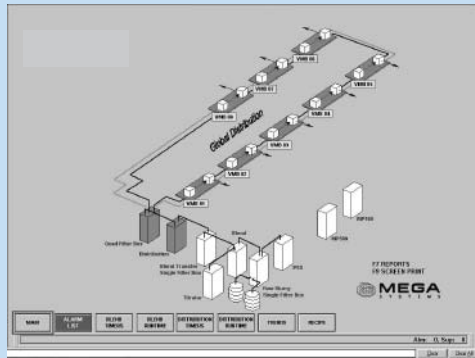
Scada client software:

- Active Display Client License
- Communication driver for Allen-Bradley Networks
- Microsoft Windows 2000 Professional

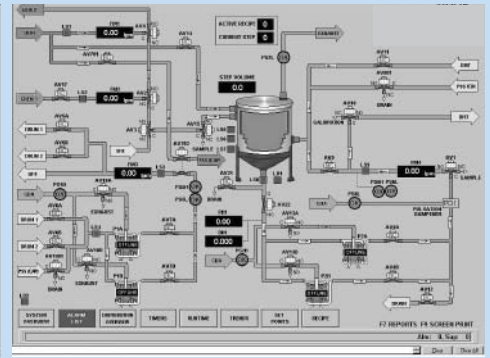
Main system screen



System overview screen



Sample process overview screen



Data logging:

- The MegaView data logging feature provides the ability to store collected data in a non-proprietary DBF file format. This provides the ability to display and analyze data using a third-party software, such as Microsoft Excel.

Alarm logging:

- The alarming capability of the MegaView allows monitoring of alarm occurrences with three levels of severity. In addition, all alarms are logged in a DBF file format.

Activity logging:

- The MegaView activity logging feature records information about the following types of system activity in a DBF file format; systems messages and errors, communication network errors, and read/write activity from tags (including operator login/logout and parameter changes.)

Remote diagnostics:

- The remote diagnostics option allows authorized Celerity's personnel dial-in access to the system's PLCs, PanelViews and SCADA. This provides a faster response time for software upgrades or customer requested changes. This option requires a customer-installed direct phone line.

Alarm paging:

- This feature allows individuals to be notified by alpha-numeric page when specific alarms are activated. The Alarm Paging Software can be configured to page when all critical, process or warnings are activated, or when specific individual alarms are activated. This option requires a customer-installed direct phone line.

Scada web server:

- This feature allows remote viewing of graphic displays, alarms, trends and access to reporting functions through any standard Web browser.

Gem system:

- The GEM System works in conjunction with Celerity's MegaView Supervisory System to provide GEM compliance. The GEM standard, specified by SEMI (Semiconductor Equipment and Materials International) defines a common set of equipment behaviors and communication capabilities. GEM compliance covers many areas, including equipment states, expected equipment behavior and documentation. The GEM System allows the user, via their SECS Host, to establish communications with each tool.



CELERITY, INC.
 1315 West Drivers Way
 Tempe, Arizona 85284
 Telephone 480.763.2200
 Facsimile 480.763.2218
 www.celerity.net



Celerity, MegaLink and MegaView are trademarks of Celerity, Inc. All other product or service names mentioned in this document may be trademarks of the companies with which they are associated. System descriptions are typical and subject to change without notice.