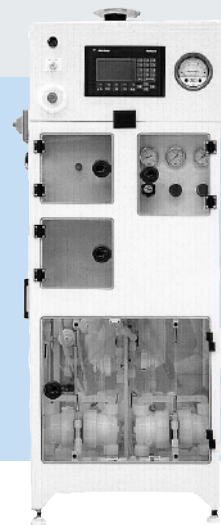


# MegaPure™ 100

## Chemical Distribution System

- » Economical
- » Space-efficient design
- » Single pass chemical filtration
- » Pulsation dampening of pump
- » Sample point for distribution
- » SEMI S2-93 reviewed
- » High-capacity option



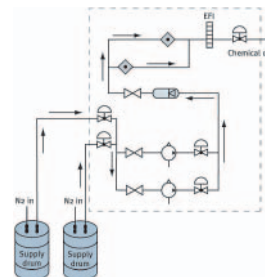
### System Features

The MegaPure 100 Chemical Distribution System with pulsation dampener provides single pass filtration at  $0.05\mu$  for acids, bases, and oxidizers with a space efficient footprint. It is generally configured for one or two 55 gallon feed drums. Advanced microprocessor PLC-based controls are isolated in a separate nitrogen purged compartment. PLC network communication enhances the system's user-friendly operator interface panel.

- Excess flow indication and shutdown
- Photoelectric leak detection and alarm
- Manual DI/N<sub>2</sub> pump and filter purging
- Recirculating DI spray gun
- Cabinet door interlocks
- Teflon™ pump with pulsation dampening
- Manual valve isolation of inlet and outlet lines and pump
- Non-intrusive drum empty detection
- Cartridge filter (10")

### Options

- Sample port
- Dual drum with auto-changeover
- High capacity (HC)
- Redundant pump
- Redundant filter (standard on HC)
- Aspirated drain
- FRPP cabinet (S2-92 and FM4910 reviewed)
- Drum cabinets
- CE Mark 220 V, 50Hz
- Particle counter connection
- Custom configuration and integration



### Reliability

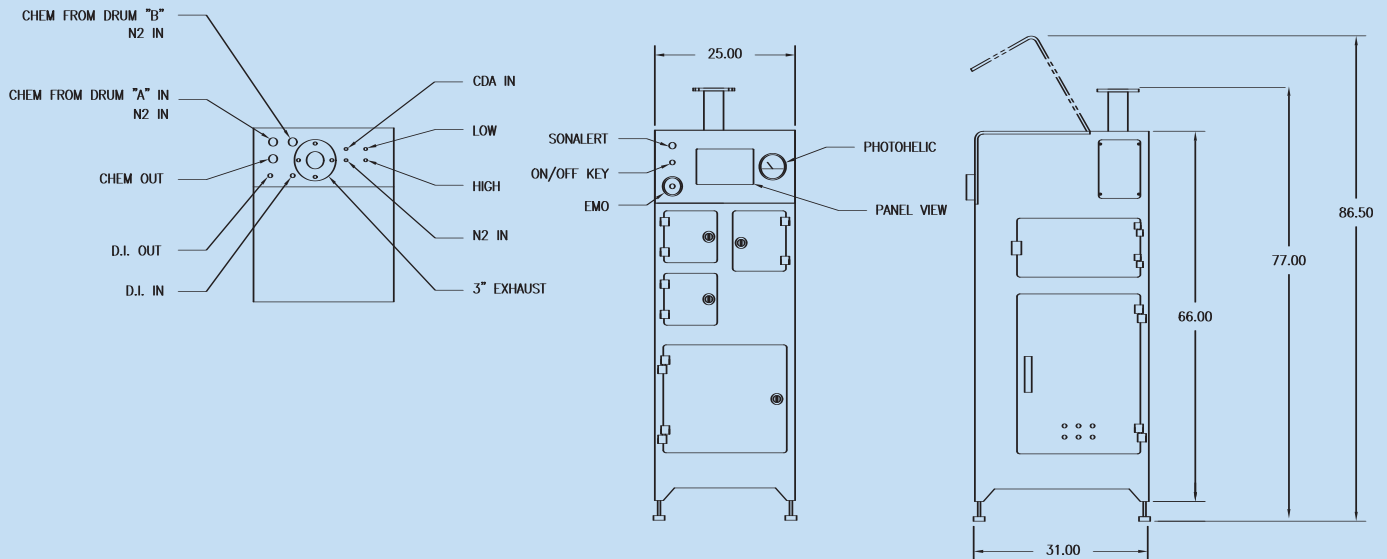
- > 2,500 hrs MTBF
- > 1,250 hrs MTBA
- < 2 hrs MTTR
- > 95% availability

### Performance

- Flow rate: 2.5 GPM @ 20 psi (Regular Flow)
- 6 GPM @ 20 psi HC (High Capacity)
- (DI water @ Exit of CDU outlet)

### Utilities for testing

- DI water (18 meg ohm)
- Semiconductor grade nitrogen (99.999%)
- Clean dry air



## Controls

- Connectivity to system PLCs via DH+ network
- Allen-Bradley monitoring system
- Local and remote EMO capability
- Dry contacts (chemical request/chemical available)

## Components

- Teflon pumps and piping
- Non-intrusive drum empty detection
- Photoelectric leak detectors
- Cartridge filter (10")
- Pulsation dampener
- Excess flow indicator

Model	MF 100	MF 100 HC
Application	Acid, bases, oxidizers	Acid, bases, oxidizers
Flowpath	3/4"	1"
Dispense rate	2.5 GPM @ 25 psi	6 GPM @ 20 psi
Cabinet Materials	Polypropylene	Polypropylene
Footprint	25" x 31" x 74"	36" x 36" x 85"
Filter Housing	10" Cartridge filter	10" Cartridge filter(s)
Leak detection	Yes	Yes

Facility requirements	MP 100	Connection Type
DI	5 GPM @ 25 psi	1/2" Teflon™ Flaretek
N2	2 SCFM, 90 psi 3 SCFM, 90 psi (HC)	3/8" SS Swagelok
CDA	10 SCFM, 80 psi 12 SCFM, 80 psi (HC)	3/8" SS Swagelok 1/2" SS Swagelok (HC)
Exhaust	65 SCFM (dist.) 2" H <sub>2</sub> O	3" Pipe flange
Process drain	30 psi, 5 GPM	3/4" FNPT polypro
Power	120 VAC, 15 AMP service	3/4" Conduit
Cabinet drain	Gravity	3/4" FNPT polypro



CELERITY, INC.  
1315 West Drivers Way  
Tempe, Arizona 85284  
Telephone 480.763.2200  
Facsimile 480.763.2218  
www.celerity.net



Celerity and MegaPure are trademarks of Celerity, Inc. All other product or service names mentioned in this document may be trademarks of the companies with which they are associated. System descriptions are typical and subject to change without notice.