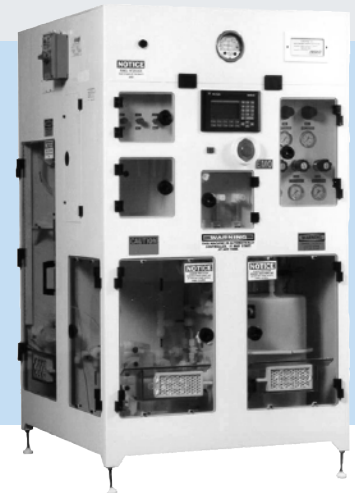


MegaBlend™ 2500SF

Precision Blending and Distribution System

- » Blend circuit/distribution circuit
- » Blend to a volumetric accuracy of $\pm 0.5\%$ relative to incoming chemistry
- » Stabilized filtration of the day tank
- » Dual set of pressure vessels with automatic changeover
- » Excess flow indication and shutdowns
- » Leak detection and alarm
- » SEMI S2-93 reviewed



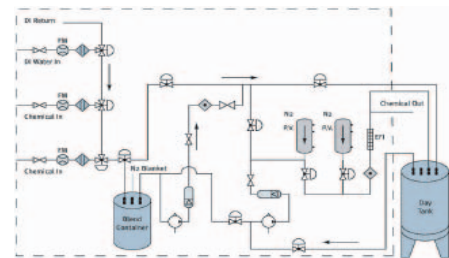
System Features

The MegaBlend 2500SF blends/dilutes chemicals from a remote bulk chemical distribution unit. Precision flowmeters blend up to three chemicals or two chemicals plus DI water to a volumetric accuracy of $\pm 0.5\%$ relative to incoming chemistry. Dispense from dual pressure vessels enhances filtration performance. With comprehensive PLC control and a user-friendly graphical operator interface, blend recipes can be easily modified. Stabilized Filtration™ of the day tank eliminates filter shocking.

- Leak detection and alarm
- Excess flow indication and shutdown
- Recirculating DI spray guns
- Blend tank sample port
- DI/N₂ pump and filter purging
- Cabinet door interlocks
- 10" cartridge filter for blend circuit
- Dual set of pressure vessels with auto changeover

Options

- Particle counter connection
- Aspirated drain
- Conductivity/temperature analysis module
- FRPP cabinet (S2-93 and FM4910 reviewed)
- CE Mark 220 V, 50Hz



Reliability

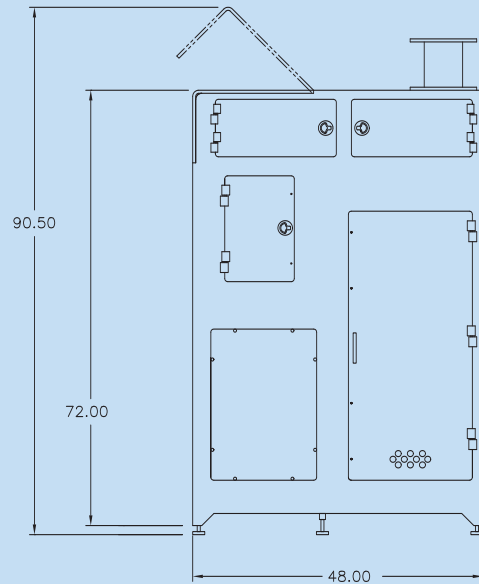
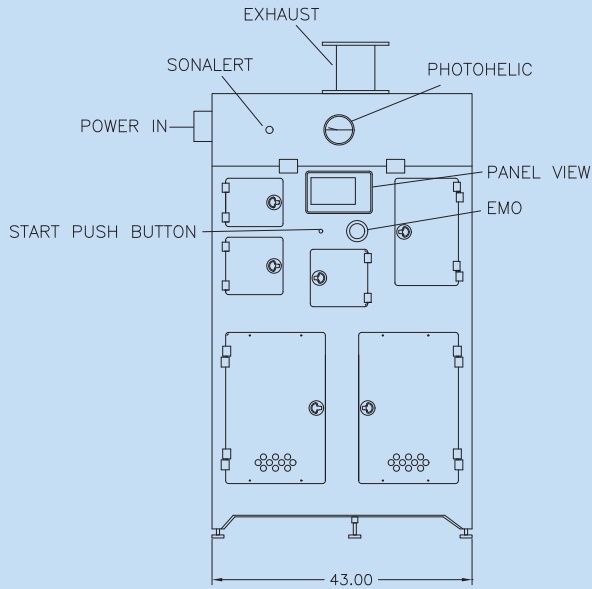
- > 4,000 hrs MTBF
- > 2,500 hrs MTBA
- < 2 hrs MTTR
- > 99.5% availability

Performance

- Flow rate: 5 GPM @ 20 psi
(DI water @ Exit of CDU outlet)
- Accurate/repeatable blends: $\pm 0.5\%$ relative

Utilities for testing

- DI water (18 meg ohm)
- Semiconductor grade nitrogen (99.999%)
- Clean dry air



Controls

- Allen-Bradley SLC 500 series PLC
- Allen-Bradley Panelview 550 GUI
 - System P&ID/status
 - Alarm and warning screens
 - Distribution valve box status
 - Pump and filter runtime screens
 - Password protected blend and flush recipe modification screens
 - Password protected calibration screens
 - Password protected maintenance screens
 - Manual activation of valves/pumps from maintenance screens
- Connectivity to system PLCs & MegaView™ Supervisory via DH+ network
- Local and remote EMO capability
- Communication with PC via PLC network

Components

- Teflon pump with pulsation dampening
- PFA pressure vessels
- Non-intrusive level sensor
- Precision flowmeters
- Photoelectric leak detectors

Model	2500SF
Application	Acid, bases, oxidizers
Make-up rate	2 GPM
# of chemicals	Two plus DI
Flowpath	3/4"
Dispense rate	5 GPM @ 25 psi
Repeatability	±0.5% Volumetric accuracy
Materials -Flowpath	PFA Teflon™ tubing
Cabinet Materials	Polypropylene
Safety	S2 - 93 Reviewed
Footprint	43" x 48" x 91"
Day Tank	Customer specific

Facility requirements	2500SF	Connection Type
DI water	5 GPM @ 40 psi	1/2" Teflon™ Flaretek
N ₂	70-100 psi	3/8" SS Swagelok
CDA	11 SCFM, 80 psi	1/2" SS Swagelok
Exhaust	200 SCFM, 2" H ₂ O	3" Pipe flange
Process drain	30 psi, 5 GPM	1" FNPT polypro
Power	120 VAC, 15 AMP service	3/4" Conduit
Cabinet drain	Gravity	1" FNPT polypro



CELERITY, INC.
 1315 West Drivers Way
 Tempe, Arizona 85284
 Telephone 480.763.2200
 Facsimile 480.763.2218
 www.celerity.net



Celerity, MegaView, and MegaBlend are trademarks of Celerity, Inc. All other product or service names mentioned in this document may be trademarks of the companies with which they are associated. System descriptions are typical and subject to change without notice.